




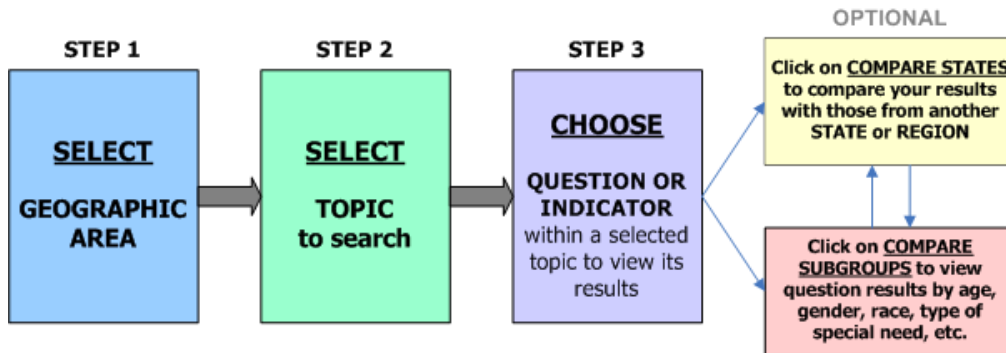
Quick Guide to Searching the Data Sets

OPTION #1: FULL SEARCH



1. **GO TO:** www.childhealthdata.org, www.nschdata.org, OR www.cshcndata.org

2. BEGIN A DATA SEARCH

- **SELECT** the Search the Data Sets button in the middle of the page **OR** Start Data Query on the left side of web page **OR** Search and Survey Data on the top right of the web page.
- Choose the Year of survey data to search. Either action takes you directly to the start of the interactive data query.
- Select a General Focus Area for your search. **SELECT** 

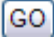


3. START A NEW SEARCH


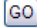
- **SELECT**  or  in the upper right corner of a data result screen.

OPTION #2: QUICK START SEARCH

1. **GO TO** www.childhealthdata.org


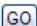
2. **SELECT** the Survey type, Year, Region, and Topic of the survey you would like to view and **SELECT** 

National Survey of Children's Health (NSCH), 2003 & 2007

 2007 

Other Search Options: [State Chartbook](#), [HP 2010](#), [Survey Sections](#), [more...](#)

National Survey of Children with Special Health Care Needs (CSHCN), 2001 & 2005/2006

 2005/2006 

Other Search Options: [Demographics](#), [Condition-Specific](#), [Survey Sections](#), [more...](#)